

Cable Assembly Solutions



CABLE ASSEMBLY

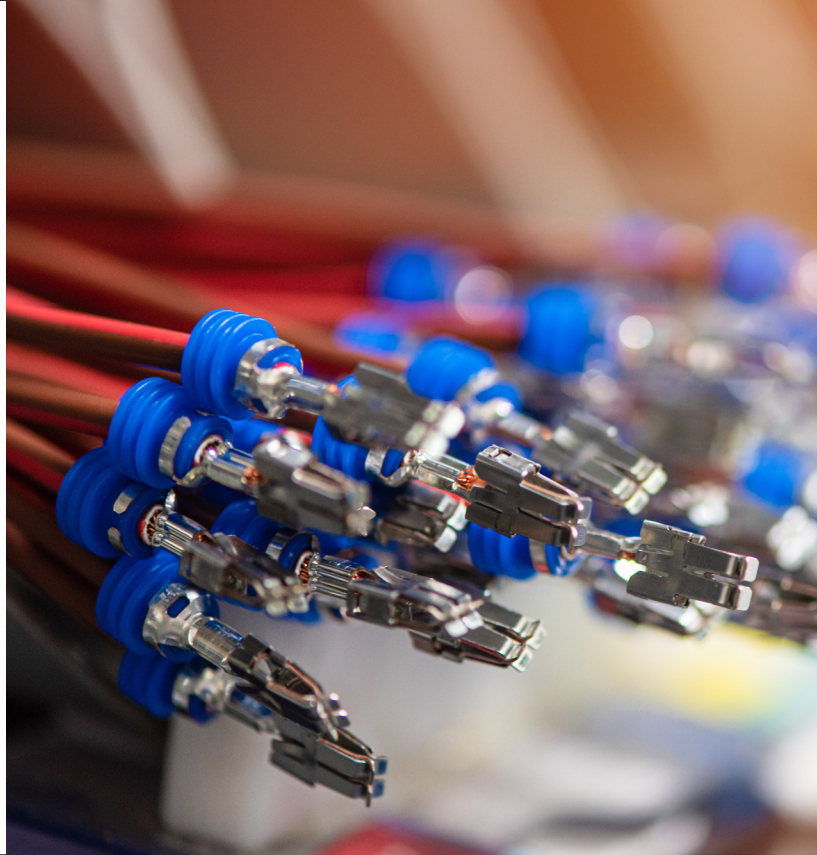
At Cable Assembly Solutions, all of our cables are assembled to IPC-WHMA-A-620, the industry gold standard for best practice in cable and wire harness fabrication and installation.

All of our cable assembly team are fully trained and certified in IPC-WHMA-A-620 techniques and practices to ensure our standard of product remains consistently high at all times.

Our cable assembly process is simple. CAS are a build to print organisation (we do not design your product but we are specialists in producing it for you). We can either work to your drawings and Bill-of-Materials (BOM) or our in-house CAD technicians can create drawings for you.

Once we have the drawings and BOM we can typically produce your first sample to approve in less than a week.

When the time comes to build your cable assemblies in quantity, we pride ourselves on the quality of our products, our fast turnaround times and our on-time delivery performance.



WIRE PREPARATION

At Cable Assembly Solutions, as well as offering full cable builds to IPC-WHMA-A-620, we also specialise in partial cable and wire preparation services.

Typical services we perform for our customers include:

- Wires cut to length, stripped and tinned
- Cables cut to length with inner cores stripped and slugs left on then coiled
- Heatshrink cut to length through our automatic cutter

Our wire and cable preparation services are highly automated using the latest machinery, meaning we can keep our prices low all with fast turnaround.

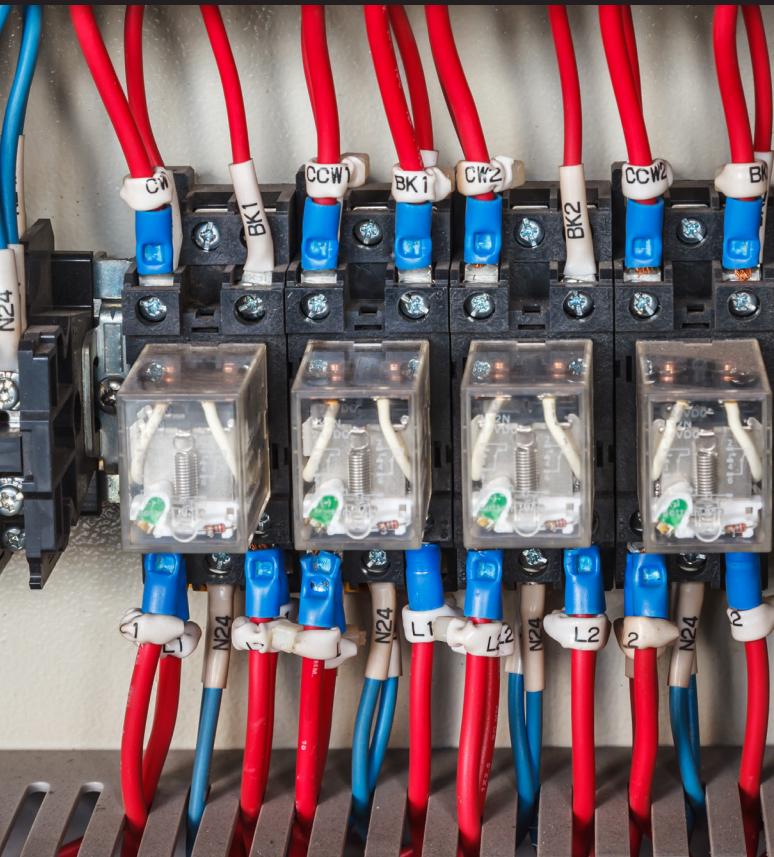
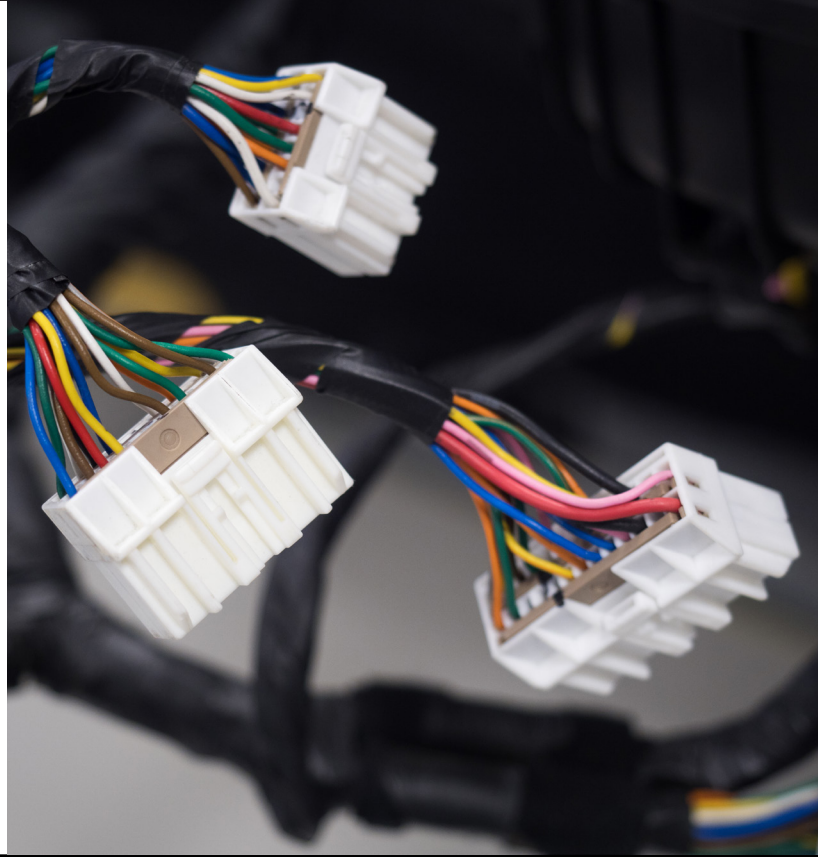
WIRING LOOM

CAS manufacture a wide range of high quality wiring harness products for customers in a variety of different markets ranging from industrial to general electronics.

These wiring looms can be bound together by straps, cable ties, cable lacing, sleeves, braid, conduit, a weave or extruded string, depending on requirements.

We can either work to your drawings and Bill-of-Materials (BOM) or our in-house CAD technicians can create drawings for you.

With many years of bespoke loom assembly experience and a team fully trained and certified in IPC-WHMA-A-620 techniques and practices, the standard of wiring harnesses and wiring looms remains consistently high at all times.



BOX BUILD

Our box build assembly services range from simple control boxes to more complex systems that form part of an engineered solution.

Our specialist Engineering Solutions team can advise on prototyping, one-off projects and design for manufacture (DfM).

Together with our sister company Emolice, we can also advise on all aspects of Sensing, Control and Integration including:

- PLC control,
- Motion control.
- Servo and Stepper motor motion,
- Absolute and Incremental Encoder systems,
- Tilt and Inclination Sensing.

❖ 2a Achilles House ❖ Calleva Park ❖ Aldermaston ❖ RG7 8RN ❖ United Kingdom
❖ Phone: (+44) 118 3805210 ❖ www.cable-assembly-solutions.co.uk ❖ email: sales@cable-assembly-solutions.co.uk